

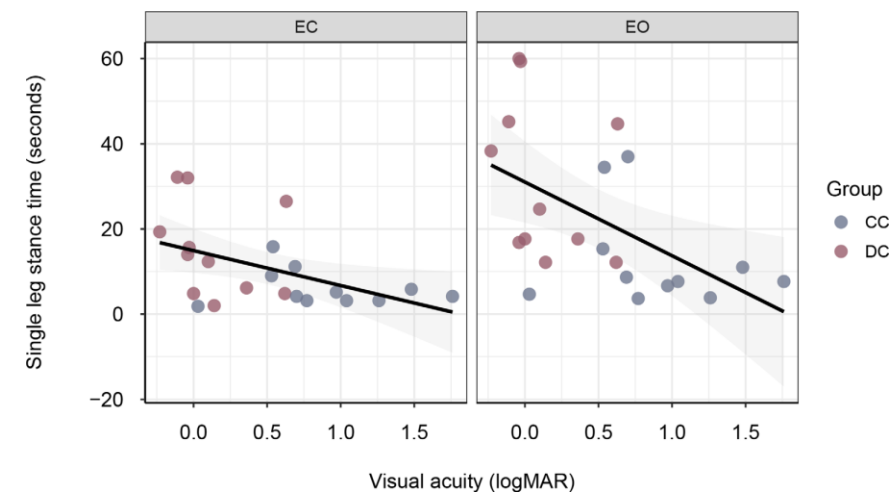
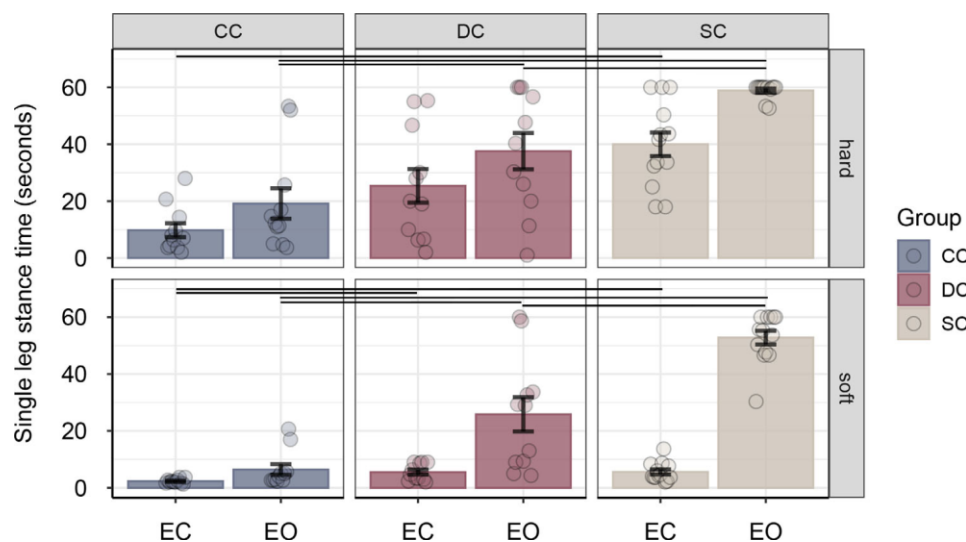
Indo-German Lab of LVPEI

Postural control depends on early visual experience

Kirsten Hötting, Idris Shareef, Ann-Kathrin Rogge, Daniel Hamacher, Astrid Zech, Ramesh Kekunnaya, Beula Christy, & Brigitte Röder

Congenitally cataract-reversal individuals (CC) showed worse balance performance (as indicated by shorter single-leg stance times) compared to **developmental cataract-reversal individuals (DC)** and normally-sighted controls (SC), both with eyes open (EO) and eyes closed (EC).

Balance performance



Importantly, **balance performance was better for sight recovery individuals with higher visual acuity** after surgery, both with eyes open and eyes closed!

Conclusion: These results highlight the **crucial role of sight for the calibration of the proprioceptive and vestibular systems**. They indicate a need for rehabilitation measures after sight restoration surgery.